

ANURAG Engineering College

(An Autonomous Institution)

IV B.Tech I Semester Supplementary Examinations, April – 2024

ESTIMATING AND COSTING

(CIVIL ENGINEERING)

Time: 3 Hours

Max.Marks:75

Section – A (Short Answer Type Questions)

(25 Marks)

Answer All Questions

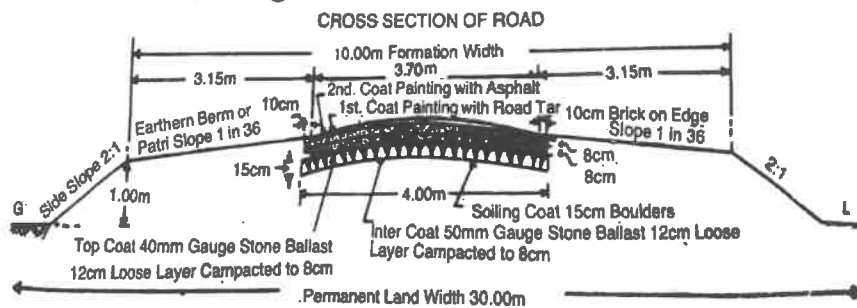
	CO's	B.T. Level	Marks
1. Define long wall and short wall method of estimation.	CO1	L1	2M
2. State the necessity of accuracy in estimate preparation.	CO1	L1	3M
3. A 16mm dia bar of length 5m used in column, calculate the weight of bar.	CO2	L1	2M
4. Draw the neat sketches for standard hook and bent up bars	CO2	L1	3M
5. State the purpose of rate analysis.	CO3	L1	2M
6. Describe the requirement of labour for RCC work and brickwork.	CO3	L2	3M
7. Define detailed specification.	CO4	L1	2M
8. Explain the method of preparation of specifications.	CO4	L2	3M
9. Define item rate contract.	CO5	L1	2M
10. List components of a typical tender notice.	CO5	L1	3M

Section – B (Essay Questions)

Answer All Questions, each question carries equal marks.

**5 X 10M = 50
Marks**

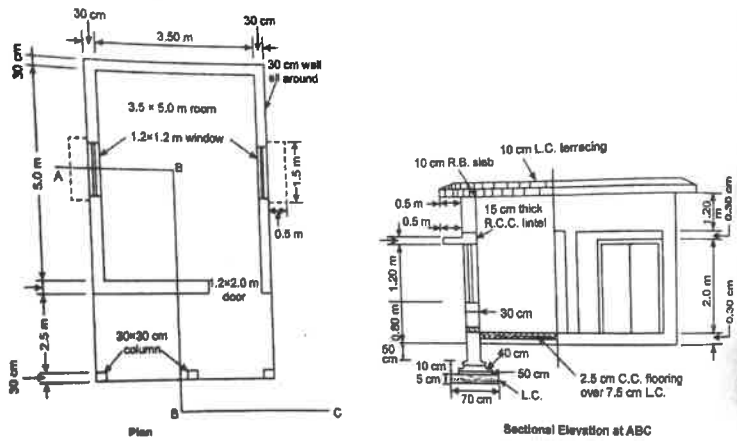
- | | | | |
|---|-----|----|-----|
| 11.A) Prepare a detailed estimation for the construction of a new state highway for 1km length. The formation width of road is 10m, average height of bank is 1m and slope 2:1. The metalled width is 3.7m three coats of metaling are to be provided as shown in figure. | CO1 | L3 | 10M |
|---|-----|----|-----|



OR

- | | | | |
|---|-----|----|-----|
| B) Estimate the quantities of the following items of a two roomed building from the given figure. | CO1 | L3 | 10M |
| i) Earthwork in excavation in foundation, | | | |
| ii) lime concrete in foundation, | | | |
| iii) 1 st class brickwork in cement mortar 1:6 in foundation and plinth. | | | |

Question Paper Code: R18A41CE01



12.A) Prepare a detailed estimate of a RCC beam of 8m clear span and 75cm X 40cm in section from the given figure. Also prepare schedule of bars. CO2 L3 10M

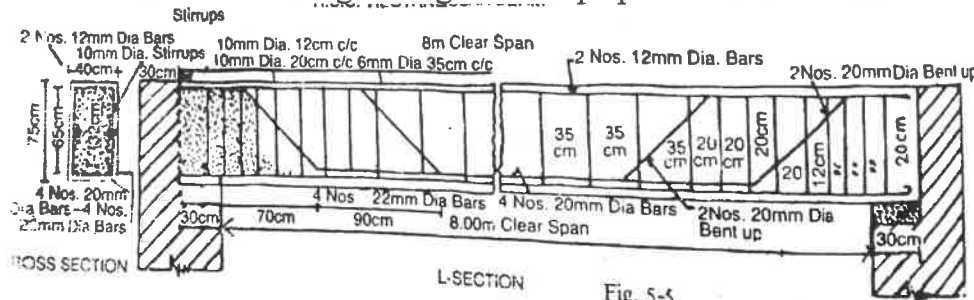
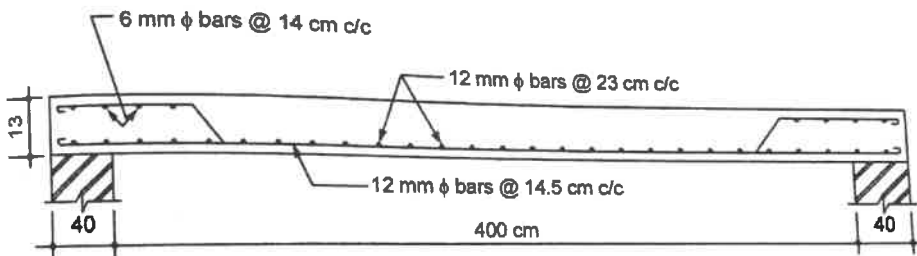


Fig. 5-5
OR

B) The figure shows the section along the shorter span of a room of size 4 X 5.5m (internal dimensions). The thickness of the slab of wall is 13cm and slab is 40cm. Prepare bill of quantities of RCC slab. Assume any dimension not given in the figure. Also prepare bar bending schedule. CO2 L3 10M



13.A) Analyse the rate of cement concrete of ratio 1:2:4. Assume necessary data. CO3 L3 10M

OR

B. Explain the importance and requirements of rate analysis, and units of measurement preparation of rate analysis. CO3 L3 10M

14.A) Write in detailed specifications of the following items of work. CO4 L3 10M

- i) Cement concrete and RCC work
- ii) Farm work

OR

B) Write the detailed specifications for damp proof course (2.5cmthick) C.C 1:1.5:3 and first-class brickwork with 1:6 cement mortar. CO4 L3 10M

15.A) List and explain the various types of contracts in detail. CO5 L2 10M

OR

B) Explain the following: CO5 L2 10M

- i) Earnest money
- ii) Security money
- iii) M Book